

Home Safe, Work Safe, GLOBAL SAFE®

THE SAFE SOLUTION®

WHAT IS THE SAFE SOLUTION®?

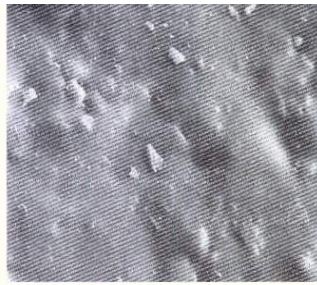
■ A chemical solution designed to increase traction by creating microscopic channels in most hard mineral surfaces, such as; ceramic tile, quarry tile, granite, porcelain, and as well, steel enamel bathtubs.

IT IS NOT A PAINT NOR IS IT A COATING!!

■ **THE SAFE SOLUTION®** treatment system is non-toxic and combined with the Neutralizer Solution, it becomes biodegradable.

HOW DOES IT WORK?

■ When water or grease puddle on non-porous hard mineral surfaces, you are actually hydroplaning on the film of water or contaminants.

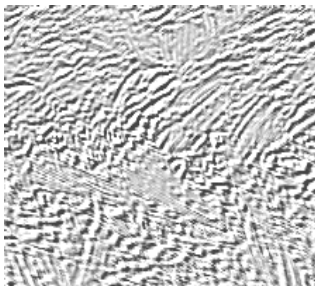


SURFACE OF TYPICAL
PORCELAIN TILE

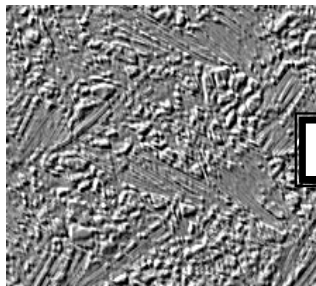


SURFACE OF GLAZED
CERAMIC TILE

BEFORE SAFE SOLUTION®



**SAFE SOLUTION® GLAZED
ANTI-SLIP TREATMENT**



**SAFE SOLUTION® GRANITE
ANTI-SLIP TREATMENT**

AFTER SAFE SOLUTION®

■ After **THE SAFE SOLUTION®** treatment system is applied, microscopic channels are created for the water and oils to be disbursed from under foot, allowing you to make contact with the surface at all times. To the naked eye and touch, the surface is virtually unchanged when dry.

“THE SAFE SOLUTION® DRAMATICALLY INCREASES TRACTION TO EXISTING SURFACES”





Global Safe Technologies (Australia) Pty Ltd

----- Creating a safer world one step at a time -----

**Home Safe, Work Safe, GLOBAL SAFE®
THE SAFE SOLUTION®**

COEFFICIENT OF FRICTION (COF)

Accepted industry standards as adopted by Underwriters Laboratory (UL) and the American society of Testing and materials (ASTM).

“A static anti-slip coefficient of .5 or above is considered a safe walkway surface.” (Under normal conditions)

In Australia the product has been independently tested by the CSIRO and on glossy tiles has achieved an average of 350% improvement in traction and exceeded the Australian standard defined requirements by 60%.

The following table details the coefficient of friction needed to ensure safety:

INTERPRETATION OF THE WET PENDULUM RESULTS (from Table 1, AS/NZS 4663:2004)			
Class	Pendulum (see Note 1) mean BPN		Contribution of the floor surface to the risk of slipping when wet
	Four S rubber	TRRL rubber	
V	>54	>44	Very low
W	45-54	40-44	Low
X	35-44	-	Moderate
Y	25-34	-	High
Z	<25	-	Very high

NOTES:
1: While either of these test methods may be used, the test report shall specify which slider was used.
2: It is expected that these wet surfaces will be more slip resistive when dry.

A SAFE SOLUTION® TREATED SURFACE:

- Dramatically Increases Traction / Exceeds Relevant Standard Requirements
- Can lower Insurance Rates* / Discounts on Public Liability Insurance*
- Reduce LOST Man-hours and Key Staff Turnover* / Increased Productivity*
- Avoid Lawsuits* and Costly Claims*
- Recommended by Fall Prevention Experts; SLIPSTOPPERS



*** WHEN COMBINED WITH OUR FSMP PROGRAM AND USING OUR *
MAINTENANCE SOLUTION™ CLEANER.**



Toll Free 1300 668 620 E-mail: info@globalsafe.com.au

Web: www.globalsafe.com.au

In Australia: 14 Astley place, Edensor park NSW 2176





Global Safe Technologies (Australia) Pty Ltd

----- Creating a safer world one step at a time -----

Home Safe, Work Safe, GLOBAL SAFE©

For further information please click on
<http://www.globalsafe.com.au/enquiry.php>

or

to get your local Authorised Dealer details click on
<http://www.globalsafe.com.au/contactus.php>

or

contact

Tibor Bode

Master Distributor

Global Safe Technologies (Australia) Pty Ltd

Tel: +61 (0)2 9823 8840

Toll Free: 1300 668 620

Email: info@globalsafe.com.au

Website: www.globalsafe.com.au



Toll Free 1300 668 620 **E-mail:** info@globalsafe.com.au

Web: www.globalsafe.com.au

In Australia: 14 Astley place, Edensor park NSW 2176

